

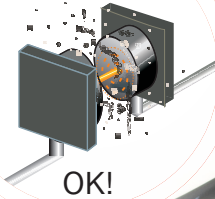
Parallel coupling  
RV/A series  
**24V/5A** and  
**28V/4A**

(For battery charging)

# Upgrade power

## Wireless power supply

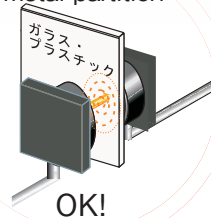
Non-metal dust\*



Dirt and waterdrop

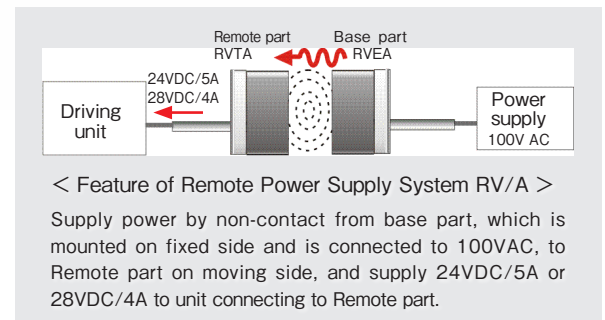


Non-metal partition



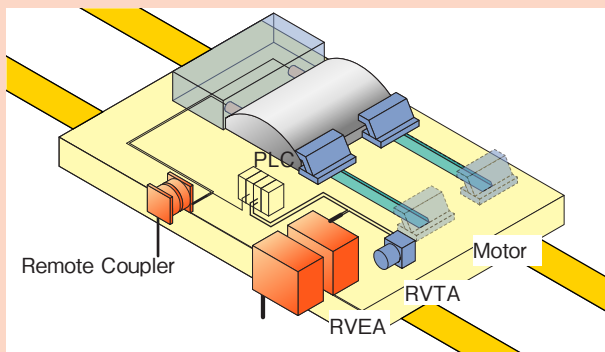
Base part :  
RVEA-411-3-PU

Remote part :  
RVTA-411-25-PU  
RVTA-411-44-PU (For battery charging)



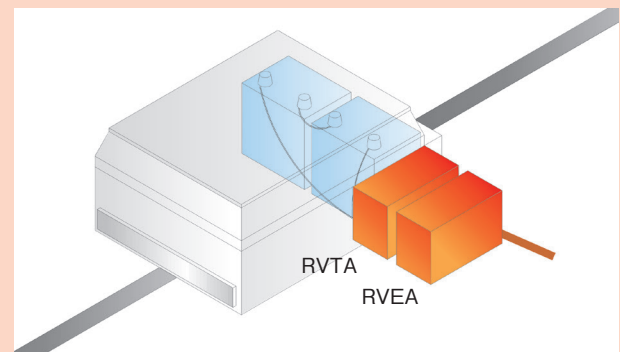
### Application

#### Power supply to motor on pallet



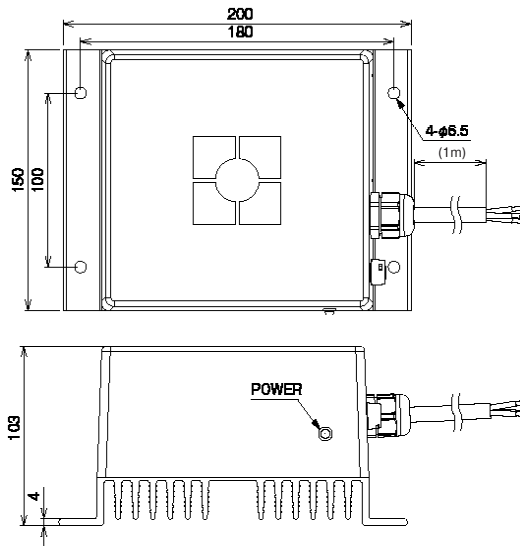
- The connector for power supply to the pallet is no longer necessary.
- Due to using PLC on the pallet, communication between pallet side and station side is only necessary at start and end of product line.

#### Battery charging to AGV

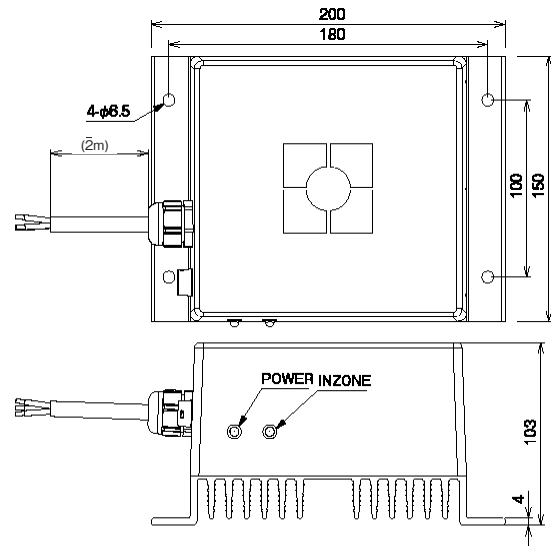


- To stop AGV is to start battery-charge.
- As current-carrying part is covered in a case, safety of an operator is defended.

\*Don't adhere to metallic dust and chips.



Remote part		
Type code	RVTA-411-25-PU-01	RVTA-411-44-PU-01 ※
Driving voltage	24V ± 2V DC	28V ± 2V DC
Driving current	max.5A	max.4A
Operating distance	0...10mm	0...10mm
Offset tolerance	± 4mm	± 4mm
Driving current	≤ 5A	≤ 4A
Operating temperature	0...+50°C	
Protection class	IP65	
Cable	PUR / φ 8 , 3 x 2mm <sup>2</sup> (BN : + / BU : - / YE+GN : FG)	
Material	Housing: PPS, Heat sink: Aluminum	
Weight	3Kg (Body) + 100g/m (Cable) = 3.1Kg	



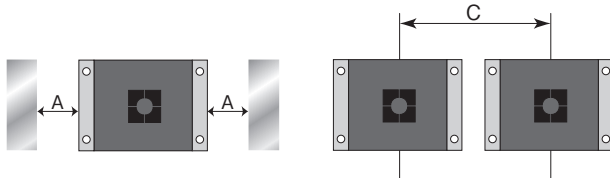
Base part	
Type code	RVEA-411-3-PU-02
Supply voltage	100V AC ± 10%
Current consumption	≤ 3A
Load current	---
Operating frequency	---
LED	Power , Inzone
Operating temperature	0...+50°C
Protection class	IP65
Cable	PUR / φ 8 , 3 x 2mm <sup>2</sup> (BN : + / BU : - / YE+GN : FG)
Material	Housing: PPS, Heat sink: Aluminum
Weight	3Kg (Body) + 100g/m (Cable) x 2 = 3.2Kg

※ For battery charging

## Mounting

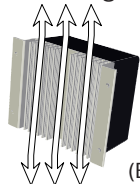
In order to avoid influence of surrounding metal, or to avoid mutual influence between parallel-mounted sensors, keep the minimum free zone as described below.

■ Influence of surrounding metal ■ Mutual interference



Type code	A(mm)	C(mm)
RVTA-411-__-PU-__	150	500
RVEA-411-3-PU-__		

■ Self-heating

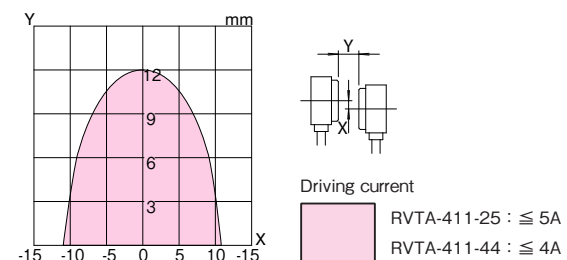


(Back side)

- (1) To keep the ideal naturally-cooled condition, please pay attention to natural convection.
- (2) Please consider about self-heating and take measure to keep the operating temperature

## Typical transmitting diagram (Supply voltage at 100VAC)

RVTA-411-\_\_-PU-\_\_ / RVEA-411-3-PU-\_\_



## Note

- Please use with driving unit for DC24 +/- 2V
- The total value of the connecting driving unit should not exceed the driving current.
- Please be sure that driving current changes depending on operating distance or center offset ( Refer to the diagram above )

Wireless Power Supply by  
**B & PLUS K.K.**

Mail : b-plus-usa@b-plus-kk.com

Web : <http://www.b-plus-kk.com>

\* Contents is subject to change without notice.

BN0803Ee

2017.08