

Wireless power supply by

B&PLUS®

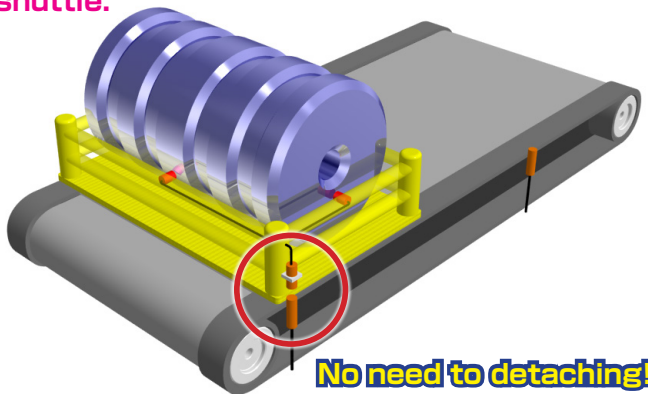
Remote sensor system

Wireless Power Supply + Sensor Signal Transmission (Switch signal)



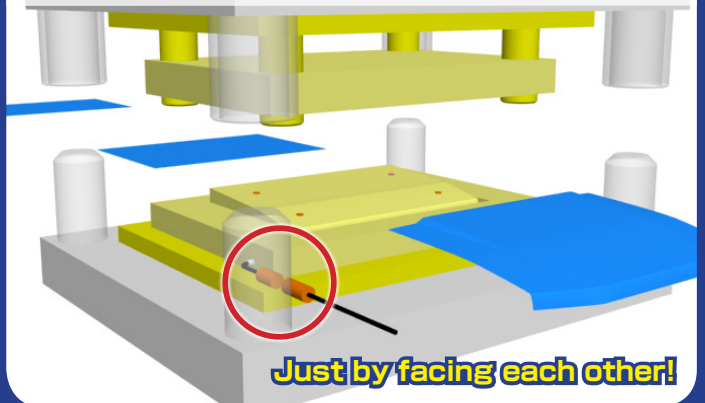
Remote sensors have been successfully used in many places.

■ Confirm the sitting work in a conveyance shuttle.



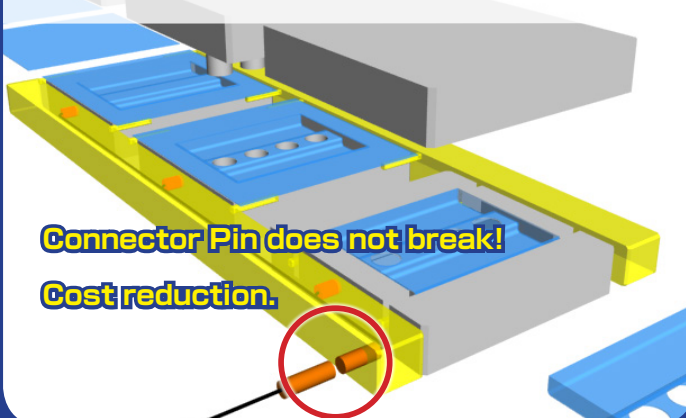
No need to detaching!

■ Work sitting confirmation on the die



Just by facing each other!

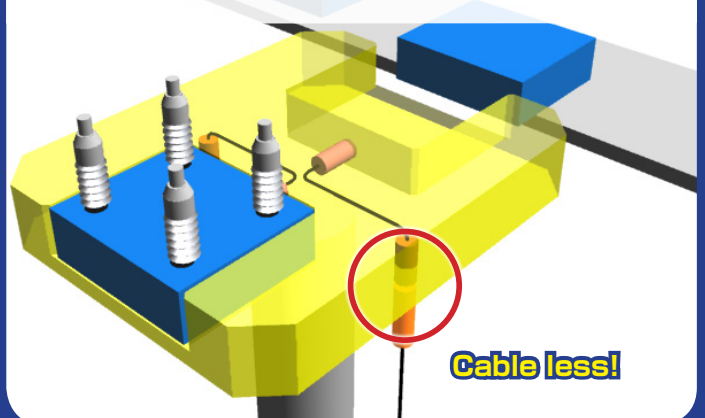
■ Work confirmation of the feed bar



Connector Pin does not break!

Cost reduction.

■ Work confirmation in rotary jig



Cable less!

It has been successfully incorporated in many places. Please fill free to contact us!

Correspond to DC 3-wire sensor / Cylinder type



● General type

Cylindrical type can easily used on site for customer.
Up to 8 signals of DC 3-wire sensors can be connected and each signal is parallel output.

※ in the □ : N(NPN) or P(PNP) (common)

Signal trans- mission	Active face Size	Max. Operating distance	Type (Transmitter)	Type (output sensor)	Drive voltage	Drive current	Remark
1	M18	4mm	RPT-1804 □ -PU	RPE-1804 □ -PU	12V DC	30mA	*
1	M30	8mm	RPT-3008 □ -PU	RPE-3008 □ -PU	12V DC	30mA	*
4	M18	3mm	RPTA-1803-PU	RPEA-1803 □ -PU	12V DC	30mA	*
4	M30	5mm	RPTA-3005-PU	RPEA-3005 □ -PU	12V DC	40mA	*
8	M30	5mm	RGPT-3005-V1215-PU	RGPE-3005-V1215 □ -PU	12V DC	150mA	*
8	M30	5mm	RPT8-3005-PU	RPE8-3000 □ -PU	22V DC	80mA	

*Anti-weld slag type is also available.



● Terminal unit type

By changing the transmitter side to a connector makes it easy and accurate to wire.
Also downsizing the head by separating transmitter.
Maximum of 24VDC/550mA Wireless power supply and 8 or 16 sensors are connectible.

※ Connector output port is different in TA type and the T type of the remote terminal. (common)
Please refer to the User's Guide.

Number of signal	Active face Size	Max. Operating distance	Type name (Transmitter / Remote terminal)	Type name (Transmitter / Transmitting head)	Type name (output sensor)	Drive Voltage	Drive Current	Remark
8	M30	8mm	RS8TA-222P-S04 RS8T-222P-S04	RSH8T-030-PU-CP1.0	RSH8E-030 □ -PU	12V DC	150mA	*
16	M30	8mm	RS16TA-211P-S04 RS16T-211P-S04	RSH16T-030-PU-CP1.0	RSH16E-030- □ -PU	12V DC	150mA	*
16	M30	5mm	RS16TB-211P-S04	RSH16TB-030-PU-CP1.0	RSH16EB-030P-PU	24V DC	550mA	*

*Anti-weld slag type is also available.

Correspond to DC 2-wire sensor / Cylindrical type.



● General type

Cylindrical type can easily used on site for customer.
Up to 15 signals of DC 2-wire sensors can be connected and each signal is parallel output.
Can be used with built-in apparatus such as machine tools.

Number of signal	Active face size	Maximum operating distance	Type (Transmitter)	Type (output sensor)	Drive voltage	Drive current	Remark
signal	M12	2mm	RPT-1202D-PU	RPE-1202 □ -PU	12V DC	5mA x 1 signal	
1	M18	4mm	RPT-1804D-PU	RPE-1804 □ -PU	12V DC	5mA x 1 signal	*
1	M30	8mm	RPT-3008D-PU	RPE-3008 □ -PU	12V DC	5mA x 1 signal	*
2	M18	4mm	RPT2-1804D-PU	RPE2-1804 □ -PU	12V DC	5mA x 2 signals	*
2	M30	5mm	RPT2-3005D-PU	RPE2-3005 □ -PU	12V DC	5mA x 2 signals	*
4	M18	3mm	RPT4-1803D-PU	RPE4-1803 □ -PU	12V DC	5mA x 4 signals	*
4	M30	5mm	RPT4-3005D-PU	RPE4-3005 □ -PU	12V DC	5mA x 4 signals	*
8	M18	3mm	RPT8-1803D-PU	RPE8-1800 □ -PU	12V DC	5mA x 8 signals	*
8	M30	7mm	RPT8-3007D-PU	RPE8-3000 □ -PU	22V DC	5mA x 8 signals	*
15	M30	5mm	RPT15-3005D-PU	RPE15-3000 □ -PU	12V DC	5mA x 15 signals	*

*Anti-weld slag type is also available.

● Terminal unit type

By changing the transmitter side to a connector makes it easy and accurate to wire.
Also downsizing the head by separating transmitter. 8 or 16 sensors are connectible.

Number of signal	Active face size	Max. Operating distance	Type name (Transmitter / Remote terminal)	Type name (Transmitter / Transmitting head)	Type name (output sensor)	Drive voltage	Drive current	Remark
signal	M30	8mm	RS8TA-222D-S04 RS8T-222D-S04	RSH8T-030-PU-CP1.0	RSH8E-030 □ -PU	22V DC	5mA x8 signals	*
16	M30	8mm	RS16TA-211D-S04 RS16T-211D-S04	RSH16T-030-PU-CP1.0	RSH16E-030 □ -PU	22V DC	5mA x16signals	*

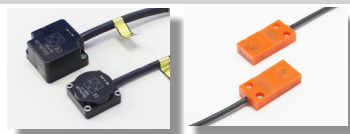
*Anti-weld slag type is also available.

● Mechanical switch type

Also available with micro-miniature M8 size. It is a remote sensor system for exclusive sensors working with small amount of electricity.

Number of signal	Active face size	Maximum operating distance	Type (Transmitter)	Type (output sensor)	Applicable sensor	Remark
1	M8	1mm	RST-0801-PU	RSE-0801 □ -PU	Use of the LED micro load switch (For exclusive Mechanical switch)	Mechanical switch
1	M12	2mm	RST-1202-PU	RXE-1202 □ -PU	Exclusive proximity sensor RXD only	Mechanical switch
1	M18	4mm	RST-1805-PU	RXE-1805 □ -PU	Exclusive proximity sensor RXD only	Mechanical switch

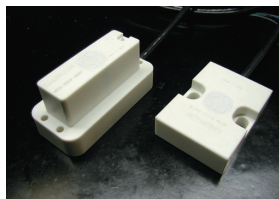
Compact shape (Correspond to DC2-wire sensor • DC 3-wire sensor)



Compact size is suitable for saving space. Specially introduced in the robot hand. Feeding to a work confirmation sensor and detecting the ON/OFF from signals transmission. Improvement on flat types that could put DC 2-wire sensor and DC 3-wire sensor together with the remote sensor of RS12 series. And also DC 2-wire type with the M12 remote sensor type.

Number of signal	Active face size	Max. Operating distance	Type (Transmitter)	Type (output sensor)	Drive voltage	Drive current	Remark
1	50x25	1.5mm	RPT-F0D-PU	RPE-F0 □ -PU	12V DC	5mA	DC 2-wire
4	35x35	3mm	RS04T-F1-PU	RS04E-F1 □ -PU	12V DC	60mA	DC 3-wire
12	45x45	5mm	RS12T-422-PU	RS12E-422 □ -PU	12V DC	230mA	DC 3-wire system/Sputtering resistant type (50x50)
12	45x45	5mm	RS12T-422 □ -PU	RS12E-422 □ -PU	12V DC	150mA	Correspond to DC 2 • 3-wire
12	45x45	3mm	RS12TA-422-PU	RS12EA-422 □ -PU	24V DC	1A	DC 3-wire
24	55x55	5.5mm	RS24T-424-PU	RS24E-424 □ -PU	24V DC	1A	DC 3-wire

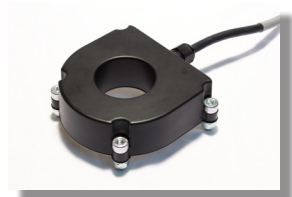
T-SLOT shape (Correspond to DC2-wire sensor • DC 3-wire sensor)



The wireless feeding and signal transmission for 8 signals of detection sensors are possible with T-SLOT shape. Improved setting space to be connectable and to fit in into the T-SLOT shape of the press device to a DC 2-wire type .3 line type sensor . It further improved installation space and realized space saving.

Number of signal	Active face size	Maximum operating distance	Type (Transmitter)	Type (output sensor)	Drive voltage	Drive current	Remark
8	40x40	5mm	RPT8-TSLOT-D-PU	RPE8-TSLOT □ -PU	20...26V DC	5mAx8 signals	DC 2-wire
8	40x40	5mm	RPT8-TSLOT-PU		12V DC	150mA	DC 3-wire

Ring remote



Remote sensor system, Center Hall structure that can be attached to the rotating axis. We' ve developed this product because of the request from a customer who was having trouble installing to the center of the rotating part. Easily able to wirelessly feed and signal transmission while rotating.

Number of signal	Active face size	Inside diameter size	Maximum operating distance	Type (Transmitter)	Type (output sensor)	Drive voltage	Drive current	Remark
15	φ 116mm	φ 50	6.5mm	RS15T-R01D-PU	RS15E-R02P-PU	12V DC	5mAx15 signals	DC 2-wire
	φ 175mm	φ 100	12mm	RS15T-R03D-PU	RS15E-R03 □ -PU			

M18/M30 High temperature remote



Remote sensor system for high temperature environment that is available in environment of 80 degrees Celsius. The wireless feeding and signal transmission for 8 signals of detection sensors are possible. Play an active part in a curing oven or the drying furnace.

Number of signal	Active face size	Maximum operating distance	Type (Transmitter)	Type (output sensor)	Drive voltage	Drive current	Remark
8	M18	3mm	RS08TA-018D-PU	RS08EA-018 □ -PU	12V DC	5mAx8 signals	DC 2-wire
8	M30	7mm	RS08TA-030D-PU	RS08EA-030 □ -PU	12V DC	5mAx8 signals	DC 2-wire

Square shape type RPTA/RGPT



Corner type shape has larger drive current and correspond to a sensors that needs large electric current. A detection side is available with RGPT-4008 and it can be selected with any combination. Easily combined depending on your needs.

Signal transmission	Active face size	Maximum operating distance	Type (Transmitter)	Type (output sensor)	Drive voltage	Drive current	Remark
8	80x80	22mm	RPTA-8015-PU	RPEA-8015 □ -PU	12V DC	100mA	DC 3-wire
8	40x40	8mm	RGPT-4008-V1220A-PU RGPT-4008-V1220B-PU	RGPE-4008-V1220 □ A-PU RGPE-4008-V1220 □ B-PU	12V DC	200mA	DC 3-wire
8	90x90	12mm	RGPT-9012-V2430-PU	RGPE-9012-V2430- □ -PU	24V DC	300mA	DC 3-wire

Pre-wired connector type 1/2/8/15 signals/ TSLOT shape






For sensor M12 connector (Transmitter : female, output sensor : male) is included. Can be reduced the wiring figure.
1Signal connector type to 2 or junction type, 8 or 15 signals connector type are available. Also available, special specifications for your request as well. please contact us.
※ For pre-wired connector the standard cable length is 30cm.

Signal transmission Signals	Active face Size	Max. Operating distance	Type (Transmitter)	Type (output sensor)	Drive voltage	Drive current	Remark
1	M18	4mm	RPT-1804 □ -PU-CP	RPE-1804 □ -PU-CP	12V DC	30mA	DC 3-wire/Sputtering resistant type (50x50)
1	M30	8mm	RPT-3008 □ -PU-CP	RPE-3008 □ -PU-CP	12V DC	30mA	DC 3-wire/Sputtering resistant type (50x50)
1	M12	2mm	RPT-1202D-PU-CP	RPE-1202 □ -PU-CP	12V DC	5mA x 1 signal	DC 2-wire
1	M18	4mm	RPT-1804D-PU-CP	RPE-1804 □ -PU-CP	12V DC	5mA x 1 signal	DC 2-wire/Sputtering resistant type (50x50)
1	M30	8mm	RPT-3008D-PU-CP	RPE-3008 □ -PU-CP	12V DC	5mA x 1 signal	DC 2-wire/Sputtering resistant type (50x50)
2	M18	4mm	RPT2-1804D-CP	RPE2-TF1804 □ -PU	12V DC	5mA x 2 signals	DC 2-wire ※ Transmitter:Pre-wired connector /Output Sensor Sputtering resistant type
2	M30	5mm	RPT2-3005D-CP	RPE2-TF3005 □ -PU	12V DC	5mA x 2 signals	DC 2-wire ※ Transmitter:Pre-wired connector /Output Sensor Sputtering resistant type
8	40x40	5mm	RPT8-TSLOT D-PU-CP	RPE8-TSLOT □ -PU	20...26V DC	5mA x 8 signals	DC 2-wire, TSLOT type ※ Transmitter:pre-wired connector
8	M30	7mm	RPTB-3007D-NAG2	RPEB-3000 □ -NAG2	20...26V DC	5mA x 8 signals	DC 2-wire /Pre-wired connector+ sputtering-resistant
15	M30	4mm	RPT15-TF3004D-TYT	RPE15-TF3000 □ -TYT	15V DC	5mA x 15 signals	DC 2-wire /Pre-wired connector+ sputtering-resistant

Terminal Box Standard type/Waterproof/Connector type



Terminal box for connecting detector sensors and general remote transmitter.
Switching internal DIP switch, DC 2wire sensor can be connected to the DC 3 wire Remote system.
DC 2 wire sensor can be connected. (There are some exceptions.)

type	Feature	Size (Body)	Type name	Applicable Remote	Sensor type
General	 <ul style="list-style-type: none"> - Aluminum die casting Using box - Protection class; IP 65 	80x125x57	For 4 signals RPK-2102	DC 3-wire	DC 3-wire and 2-wire sensor
		80x125x57	For 8 signals RPK-2101	DC 3-wire	DC 3-wire and 2-wire sensor
		80x125x57		DC 3-wire	DC 3-wire and 2-wire sensor
		80x125x57		RPTB-3007D-NAG1 RPTA-1803TW	DC 2-wire
		80x175x57		DC 2-wire	DC 2-wire
Water-proof	 <ul style="list-style-type: none"> - Original "α-box" which has a round screw lid. - Protection class; IP 67. 	100x136x60	For 8 signals RPK-A098-02	DC 3-wire	DC 3-wire and 2-wire sensor
		100x136x60		DC 3-wire	DC 3-wire and 2-wire sensor
		180x180x58		DC 3-wire	DC 3-wire and 2-wire sensor
		100x136x60		DC 2-wire	DC 2-wire
		100x136x60		DC 2-wire	DC 2-wire
		180x180x58	For 15 signals RPK-B148-03	DC 2-wire	DC 2-wire
Connector	 <ul style="list-style-type: none"> - Connect M12 connector to detector. - Protection class; IP 67. 	60x105x43	For 4 signals RPK-4C01-□	DC 3-wire	DC 3-wire and 2-wire sensor
		60x157x43	For 8 signals RPK-8C01-□	DC 3-wire	DC 3-wire and 2-wire sensor
		60x157x43		For RGPT-xxxx	DC 3-wire and 2-wire sensor

* DC 3-wire are available for DC 2-wire sensors. For more information, please visit our website

* Detector sensors can be use with commercial sensor.

* Each part number after PU is the cable length. Standard 1m for transmission department, and 2m for the output part. Ex : PU01=1m, PU05=5m

Wireless Power Supply by
B & PLUS K.K.

Mail : sales@b-plus-kk.com
Web : <http://www.b-plus-kk.com>

* When operating, please follow the instruction manual and user's guide. Users' s guide can be downloaded on our HP.

* Some products may to need have a permission for using high frequency in the facilities.

* Specification is subject to change without notice. Thank you for understanding.

BN1710Be

2020.05