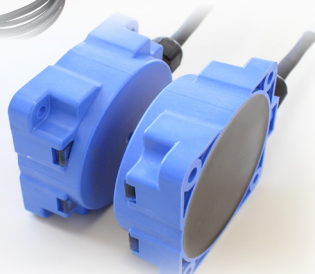


Just by facing each other

Wireless Power Supply/ Power Charge

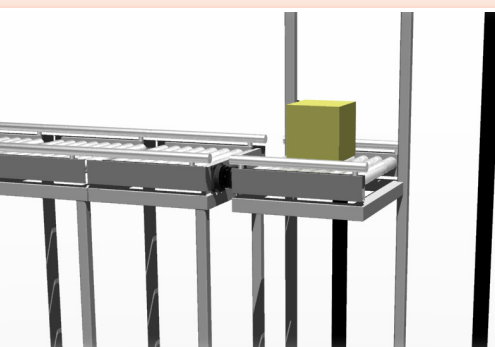
Remote Power supply system helps from complicated wiring such as rotating, mounting/dismounting and conveyance equipments by wireless power supply and charging system.



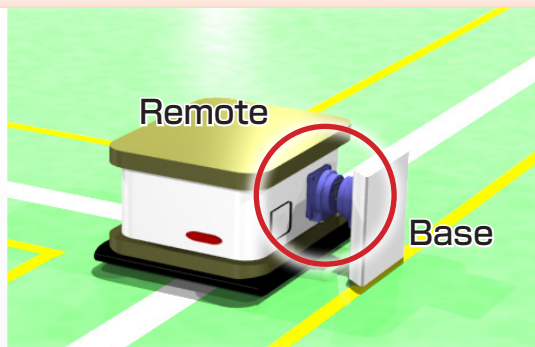
• Various lead battery from different companies can be used!

Example of the application

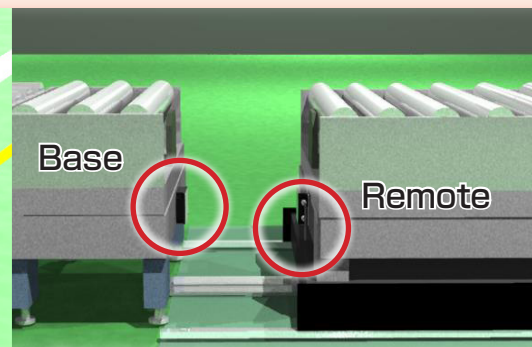
By changing the equipments to wireless power supply, it resolves the cable troubles!!



Lifter :
Wireless power supply to power moller



AGV: Charging wirelessly to battery



Power moller :
Charging wirelessly to battery

Product lineup • Charging

■ Charging (24V lead storage battery) / 30V/7A

(the battery side)

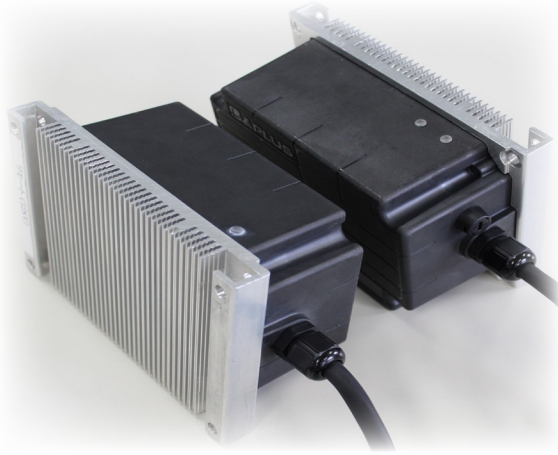
(the fixed side)



It is exclusive for 24V lead storage battery wireless Power Supply In addition to charging type, it is equipped with the functions such as a protection function and battery residual quantity monitor.

Type	Charging Supply	Head RCS240PH, Unit RCS210-PB24 Head RCS240AH, Unit RCS240-AC01
Feeding system		CCCV (constant current · constant voltage) CC : max7A/CV : max30V
Supply voltage / Current consumption		100V AC / 200V AC / ≤ 4A
Transmission range/Center offset		0...10mm / ≤ 10mm (A major axis, the totals of the each minor axis are less than 10mm) Passive Head Active Head
Cooling method		Natural air cooling : charging unit / Forced air cooling : Power Supply unit
Size (mm)		100×140×40 ※ Except for cable outlet /Receiving head ·Feeding head 188×230×50.5 : Charging unit/210×300×80 : Power Supply unit
Weight		1300g : Each Head 1600 g : Charge unit /2700g : Power Supply unit
Protection class		IP65 (indoor base station) : Passive Head · Active Head IP20 (indoor base station) : Charging unit · Power Supply unit

■ Charging (12V·24V lead storage battery) / 14.8V8.5A · 29.0V4.3A



It is a charge type specialized in a 12V/24V lead storage battery. Confirm the residual valve of the battery and charge it by CCCV charge. In addition, it will shift to a float charge mode after charge. **Subject to high frequency utilization equipment application**

		12V	24V
Type code	Remote	RVT-433-508-PU-01	RVT-433-404-PU-01
	Base	RVE-433-2-PU-02	
Drive voltage / current(Remote)		≤ 14.8V / ≤ 8.5A(The voltage electric current changes by a battery voltage)	≤ 29.0V / ≤ 4.3A(The voltage electric current changes by a battery voltage)
Supply voltage / Current consumption(Base)		24VDC ± 10% (including ripple) / ≤ 8A	
Transmission range/Center offset		0 ~ 10mm / ± 4mm	
Size (mm) Remote and Base		110 × 160 × 75 ※ Except for the cable outlet.	
Weight	Remote	Body1600g + Cable150g × 1m	
	Base	Body1600g + Cable150g × 2m	
Operating temperature / Protection class		0...+50℃ / IP65 · IP67	

■ 80W Charging (48V Lithium ion Battery) 54.3V/1.55A

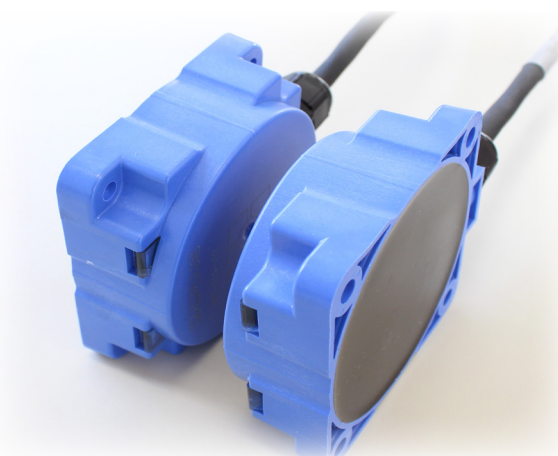
Charge 48V Lithium ion Battery wirelessly. Confirm the residual valve of the battery and charge it by CCCV charge.

Subject to high frequency utilization equipment application



Type code	Remote	RVT-256-801LI-01
	Base	RVE-256-2-02
Feeding system		CCCV (constant current · constant voltage) CC : ≤ 1.55A CV : 53.6V + 0.7V/-1.1V
Supply voltage		24VDC ± 5% (including ripple)
Current consumption(Base)		≤ 5A
Transmission range		5 ~ < 12mm / ± 18mm
Center offset		12 ~ < 15mm / ± 14mm 15 ~ 18mm / ± 8mm
Size (mm) Remote and Base		110 × 110 × 40 ※ Except for the cable outlet.
Weight	Remote	Body 730g+cable 55g × 1m
	Base	Body 690g+cable 110g × 2m
Operating temperature		0...+50℃
Protection class		IP67

■ Charging (12V lead storage battery) / 14.4V2A



Charge 12V lead storage battery wirelessly. Confirm the residual pressure of the battery and charge it by CCCV charge. In addition, it will shift to a float charge mode after charge. Able to simply charge the small battery of 12V

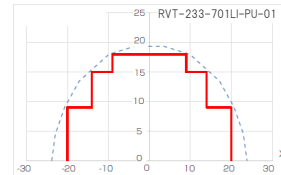
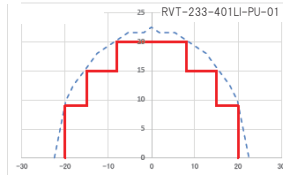
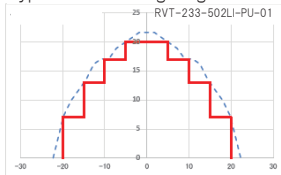
Type code	Remote	RVT-210-502-PU-01
	Base	RVE-210-2-PU-02
Drive voltage / current(Remote)		14.4V CV control upper limit voltage/ ≤ 2A CC control current
Supply voltage / Current consumption(Base)		24VDC ± 10% (including ripple) / ≤ 2A
Transmission range/Center offset		4 ~ 10mm / ± 5mm
Size (mm) Remote and Base		80 × 80 × 30 ※ Except for the cable outlet.
Weight	Remote	Body280g + Cable82g × 1m
	Base	Body280g + Cable82g × 2m
Operating temperature / Protection class		0...+50℃ / IP67
LED Remote/Base		While feeding: yellow While facing: green While Feeding: Overheat Yellow

■ 30W Charging (Lithium ion Battery) 14.2V/2A · 28.9V/1A · 41.75V/0.8A



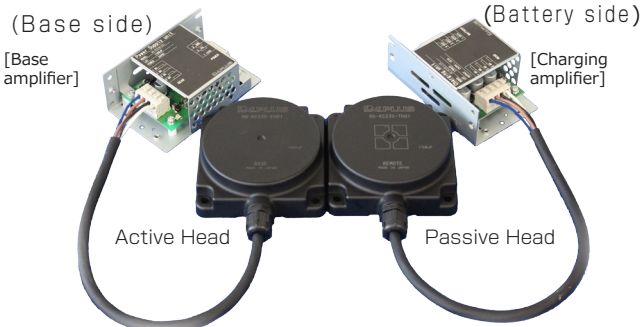
Charge Lithium ion Battery wirelessly. Confirm the residual value of the battery and charge it by CCCV charge. Charging automatically stops when fully charged. Equipped with various protection features for safe and reliable use.

Typical Transmitting Diagram



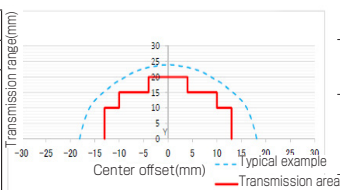
		12V	24V	36V
Type code	Remote	RVT-233-502LI-PU-01	RVT-433-401LI-PU-01	RVT-433-701LI-PU-01
	Base	RVE-233-2-PU-02 (common)		
Feeding system		CCCV(constant current · constant voltage) CC : 2 ± 0.2A CV : 14.2 ± 0.2V	CCCV(constant current · constant voltage) CC : 1 ± 0.1A CV : 28.9 ± 0.35V	CCCV(constant current · constant voltage) CC : 0.8 ± 0.1A CV : 41.75 ± 0.6V
Supply voltage		24VDC ± 10% (including ripple) / Driving : ≤ 2A Standby : ≤ 0.1A		
Current consumption				
Transmission range		0 ~ 20mm / See the left figure. Varies depending on transmission range. See the upper right figure.		
Center offset				
Size (mm)		80 × 80 × 30 ※ Except for the cable outlet.		
Weight	Remote	Body 300g+Cable 82g × 1m		
	Base	Body 300g+Cable 82g × 2m		
Operating temperature		0...+50℃ / IP65 · IP67		
Protection class				

■ 30W Charging 28.9V/1A (For Use Only with Furukawa Battery Lithium-ion Secondary Batteries)



This is a wireless charging system designed exclusively for Furukawa Battery lithium-ion battery packs. It is ideal for powering small robots or equipment on pallets.

Type code	7LPL0678G8C1-1M01
Specifications	5.3Ah (25.2V)



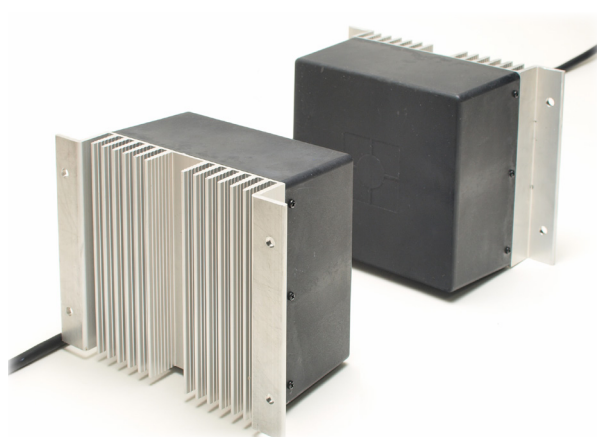
Connection connectors and cables are available separately.

Type code	Battery side	Head : RCS30-TH01、 Amplifier : RCS30-LI24
	Base side	Head : RCS30-EH01、 Amplifier : RCS48-DC1
Feeding system		CCCV (constant current · constant voltage) CC : 1 ± 0.1A / CV : 28.9 ± 0.35V
Supply voltage		24VDC ± 10% (including ripple)
Current consumption		≤ 2.3A (At a supply voltage of 21.6V) / ≤ 0.1A
Driving / Standby		
Transmission range		0 ~ 20mm / Varies depending on transmission range. ※ See the left figure.
Center offset		
NTC Input		Max.2 signals (If only one point is used, connect it to 'Thermistor 1')
Size (mm)		85 × 85 × 26 ※ Except for the cable outlet.:Head 60 × 93.5 × 32 : Amplifier
Weight		310g : Head / 110g : Amplifier
Operating temperature		-10...+50℃ / Head only IP67
Protection class		

Product lineup • Power supply

■ Power supply/24V5A

Subject to high frequency utilization equipment application



Big capacity power Mollar or motor is used as a driving power. In addition, it can be changed to a 24V charge type just by changing the facing head.

Type code	Remote	RVTA-411-25-PU-01
	Base	RVEA-411-3-PU-02
Drive voltage / current(Remote)		24V ± 2V / ≤ 5A
Supply voltage / Current consumption(Base)		100VAC ± 10% / ≤ 3A
Transmission range/Center offset		4 ~ 10mm / ± 4mm
Size (mm) Remote and Base		150 × 200 × 103 ※ Except for the cable outlet.
Weight	Remote	Body 3000g + Cable 100g × 1m
	Base	Body 3000g + Cable 100g × 2m
Operating temperature / Protection class		0...+50℃ / IP65
LED (Base)		Power, INZONE

Power supply/24V2A

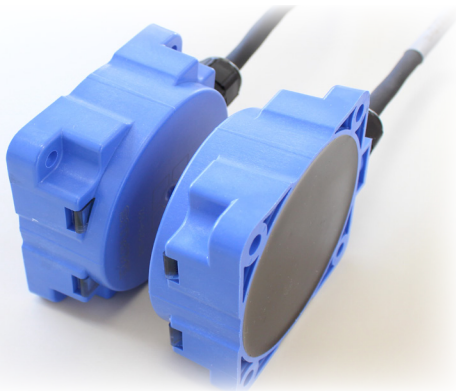


By the power Mollar, motor drive and the supporting power supply, it feeds 24V2A wirelessly. It becomes an intermittent oscillatory wait mode at the time of the non-facing.

Type code	Remote	RVT-211-22-PU-01
	Base	RVE-211-2-PU-02
Drive voltage / current(Remote)	24V ± 1.5V DC / ≤ 2A	
Supply voltage / Current consumption(Base)	24V ± 5% / ≤ 4A	
Allowable axis deviation and drive current at transmission range	Transmission range	Center offset
	4...9mm	± 5mm
Size (mm) Remote and Base	6...8mm	± 3mm
	90 × 90 × 45 ※ Except for the cable outlet.	
Weight	Remote	Body600g + Cable120g × 1m
	Base	Body620g + Cable120g × 2m
Operating temperature / Protection class	0...+50°C / IP67	

•Inrush current limiting units are available depending on the situation of the customer's equipment.

Power supply/12V2.5A



It is a power supply type specialized in a drive apparatus of 12V. It is lower cost type than 24V and is the product that it is most suitable for 12V drive.

Type code	Remote	RVT-210-102-PU-01
	Base	RVE-210-2-PU-02
Drive voltage / current(Remote)	12V ± 5% / ≤ 2.5A	
Supply voltage / Current consumption(Base)	24VDC ± 10% (including ripple) / ≤ 2A	
Transmission range/Center offset	4 ~ 10mm / ± 5mm	
Size (mm) Remote and Base	80 × 80 × 30 ※ Except for the cable outlet.	
Weight	Remote	Body280g + Cable82g × 1m
	Base	Body280g + Cable82g × 2m
Operating temperature / Protection class	0...+50°C / IP67	
LED Remote/Base	In feeding: yellow In facing: green / In Feeding: Lighting	

Power supply/24V1A



Bracket type code : B-PLUS-BLOP=01

It is a compact remote system that can supply 1A despite its small size. Suitable for powering LEDs and small motors. We also sell convenient brackets with special screws. Installation is possible immediately.

Type code	Remote	RVT-422-201-PU-01
	Base	RVE-422-2-PU-02
Drive voltage / current(Remote)	24V ± 1.5V / ≤ 1A	
Supply voltage / Current consumption(Base)	24VDC ± 5% (including ripple) / ≤ 1.4A	
Transmission range/Center offset	0 ~ 3mm / Refer to the instruction manual for details.	
Size (mm) Remote and Base	45 × 45 × 25 ※ Except for the cable outlet.	
Weight	Remote/Base	Body90g + Cable60g × 1m / Body90g + Cable60g × 2m
Operating temperature / Protection class	0...+50°C / IP67	
LED Remote/Base	Green : Status LED	

Power supply/Mating type 24V1A



Just by plugging the convex based part to concave remote part, it will wirelessly power supply. Because it is interdigitation type and small, waterproofing connection of the large electricity, 24V1A is possible.

Type code	Remote	RVTI-030-21-PU-01 (M30)
	Base	RVEI-030-2-PU-02 (M30)
Drive voltage / current(Remote)	24V ± 1.5V DC / ≤ 1A	
Supply voltage / Current consumption(Base)	24VDC ± 10% / ≤ 3A	
Transmission range	3 ~ 10mm	
Size (mm) Remote and Base	M30, 110.5mm / M30, 110.5mm	
Weight	Remote/Base	Body200g + Cable50g × 1m / Body180g + Cable50g × 2m
Operating temperature / Protection class	0...+50°C / IP67	

Please make sure to follow the instructions.

- When operating, please follow the instruction manual and user's guide. Users' s guide can be downloaded on our HP.
- Some products may need have a permission for using high frequency in the facilities.
- Specification is subject to change without notice. Thank you for understanding.

Wireless Power Supply by
B & PLUS K.K.

Mail : b-plus-usa@b-plus-kk.com
Web : <http://www.b-plus-kk.com>