

NEW!

Just by facing each other
Wireless Power Supply

Compact series

Specialized for
power supply

High power joins!

Compact design
**45x45x25
mm**

IP67
waterproof
dustproof

It is small, but it can feed 1A!

actual size



Remote RVT-422-201-PU-01
Base RVE-422-2-PU-02

Compact design and just needs small space

- For supplying power to LEDs, small motors, etc.
- Combine with wireless module
- Suitable for the substitution of the slip ring.

Compact but high power wireless power supply! Benefits of the compact!

It is possible to use it combined with the conventional remote sensor!

- Separate the sensor power supply and the power supply source with safety measures.
- Use as an auxiliary power because there is not enough power.



Because it is compact
Good!

Compact 12 signal transmission



NEW!

Compact high power



example

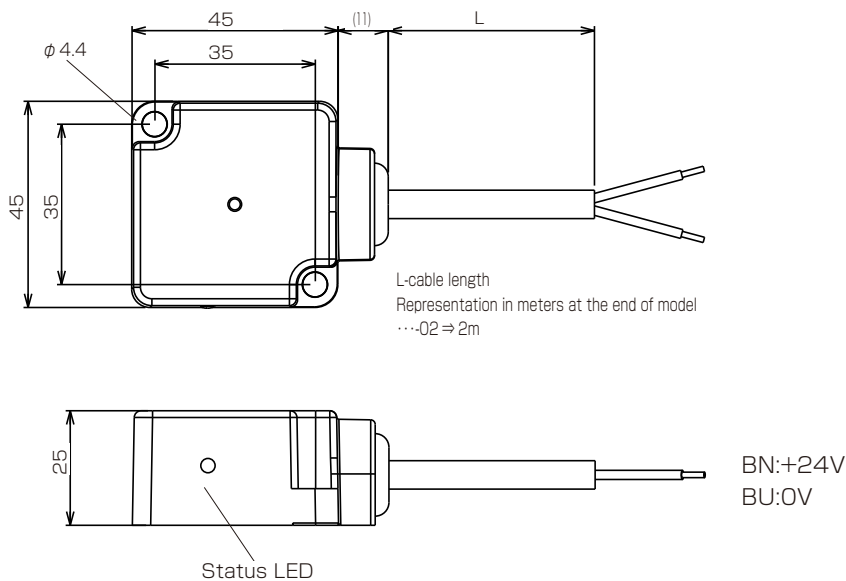
Power for Sensor+signal transmission

Power for power supply

Dimension

Transmitter RVT-422-201-PU-01

Output sensor RVE-422-2-PU-02



Specification

Type Transmitter	RVT-422-201-PU-01
Operating distance	0...3mm
Center offset	± 4 mm (Transmission distance within 2 mm) ± 1.5 mm (Transmission distance 2mm ~ 3mm)
Drive voltage	24V \pm 1.5V
Total drive current	≤ 1 A
LED	GN:Status LED
Operating temperature	0...+50°C
Protection class	IP67
Cable	0.75mm ² 2-wire ϕ 6.2mm
Material	Case: Polyurethane (Surface treatment: two-pack acrylic urethane paint) The heat radiating plate: Aluminum
Weight	Body 90g +Cable 60g x 1m

Type Output sensor	RVE-422-2-PU-02
Supply voltage	24V DC \pm 5%(incl.ripple)
Current consumption	max.1.4 A (with 1A drive) max.0.1 A (when not facing)
LED	Green:Status LED
Operating temperature	0° ...+50°C
Protection class	IP67
Protection circuit	Reverse connection protection, overtemperature protection, overcurrent protection, metal protection ¹⁾
Cable	0.75mm ² 2-wire ϕ 6.2mm
Material	Case: Polyurethane (Surface treatment: two-pack acrylic urethane paint) The heat radiating plate: Aluminum
Weight	Body 90g + Cable 60g x 2m

¹⁾ Metal protection is a function to prevent metal heat generation when metal is opposed, and it is not guaranteed to operate with all metals.. Please do not deliberately confront the metal against the communication surface.

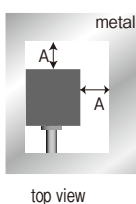
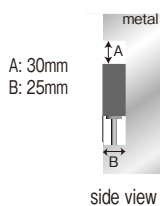
Installation notes

Type code	(mm)		
	A*	B	C
ARVT-422-201-PU-01	30	25	250
RVE-422-2-PU-02			

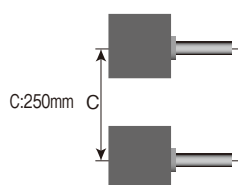
* Possible that only one side, the metal contacts.

* Tightening torque of screw at installation $\Rightarrow 1.5 \text{ N} \cdot \text{m}$

Surround Metal

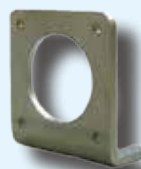


Parallel installation



Combinient!

the bracket



Mounting screws
are included.



[Type] B-PLUS-BLOP-01
made of rust resistant SUS

[Installation]

Coming soon!

- Input 4 + Output 4 signals transmission type
- DC 3-wire type specification 12 signals transmission type
- DC 3-wire type specification 24 signals transmission type

Wireless Power Supply by
B & PLUS K.K.

Mail : b-plus-usa@b-plus-kk.com
Web : <http://www.b-plus-kk.com>

*Specification is subject to change without notice. Thank you for understanding.

*Please refer to instruction manual or the user's guide. It can be download by HP

BN1804Be 2018.12