

Remote PowerSupply System

Base Part : RVEI-030-2-PU__

Remote Part : RVTI-030-21-PU__



Safety Considerations

Please read carefully before using and full attention to Safety Considerations. (See the attached T318501)

Outline & Specification

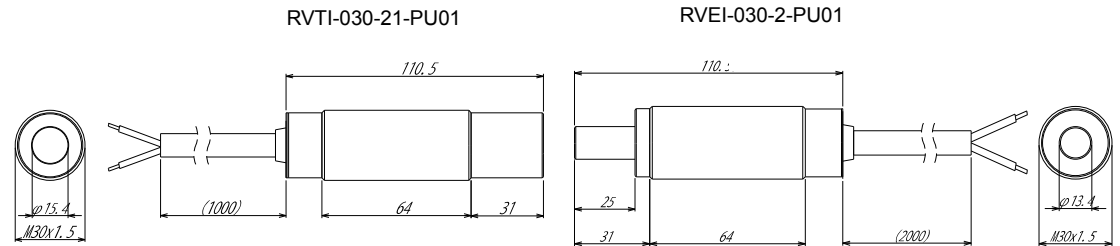
24VDC/1A can be supplied in M30.

Covering current-carrying part makes it possible to remove under wet condition.

		Remote part	Base part
Type number		RVTI-030-21-PU__	RVEI-030-2-PU__
Drive voltage		24V±1.5V DC	-
Drive current		=<1A*1	-
Supply voltage		-	24VDC±10%
Current consumption		-	=<3A
Operation distance		3...10mm	
Material	Case	Nickel plated brass	
	Active surface	ABS	
Cable		Phi6.2 , 2 x 0.75mm ² /PUR Brown : 24VDC / Blue : 0V	
Operation temperature		0...+50 deg.C.	
Protection class		IP67	

*1 : The capacitor that can be connected with load is assumed to be 100uF.

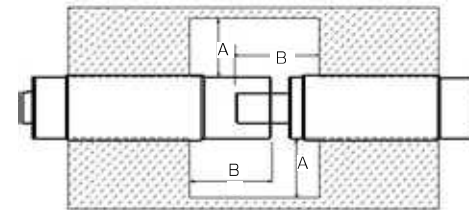
Dimension



Cautions for Head attachment

Influence of Surrounding Metal

When the Heads are mounted in metal, keep minimum spacing as described below in order to avoid influence of surrounding metal.

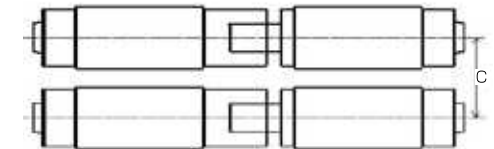


Type number	A	B
RVTI-030-...	30	35
RVEI-030-...		45

(mm)

Mutual intererance of the Head

In order to prevent mutual interference between parallel-mounted sensors, keep minimum spacing as described below.



Type number	C
RVTI-030-... --- RVEI-030-...	35

Notes for wiring

(1)Cable length of Base head must not be longer than 10m and Remote head must not be longer then 10m.