

Remote Power Supply System	
Remote part	: RVTA-411-25-PU-__ RVTA-411-44-PU-__
Base part	: RVEA-411-3-PU-__

Attention for Installation

(Read this section thoroughly before installation.)

Before using the Remote Sensor, read this manual carefully.
During installation and operation, pay close attention to the safety aspect.

- ◆ Ensure the power is switched off during installation or maintenance operations.
- ◆ Ensure correct connections by reference to the wiring diagram.
- ◆ To avoid malfunction caused by induction noise, cable should be kept apart from motor or other power cable.
- ◆ This product, which is one of those high frequency utilization equipment of Radio Law, Upon use You will need to install application. Please use it after you have made the application without fail. Installation details of the application procedure, see Telecommunications website of the Ministry of Internal Affairs and Communications, Please.

Outline

The power supply of 24VDC / 5A or 28VDC / 4A can be supplied to Remote part.

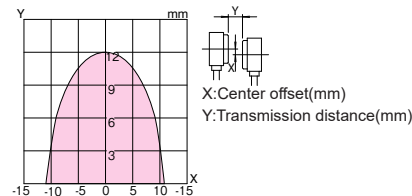


Specification

Base unit	RVEA-411-3-PU-__	
Transmit unit	RVTA-411-25-PU-__	RVTA-411-44-PU-__
Base part Specification	Supply voltage	100V AC ± 10%
	Current consumption	≤ 3A
Operating distance	0...10m	
Center offset	±/± 4mm	
Drive voltage	24V DC ± 2V	28V DC ± 2V
Drive current	5A	4A
Cable	phi 8, 2x3mm ² / PUR	
Operating temperature	0...+50 deg.C.	
Protection class	IP 65	
Weight	3Kg (Body) + 100g/m (Cable)	

Transmitting area diagram

[Supply voltage : 100V AC]

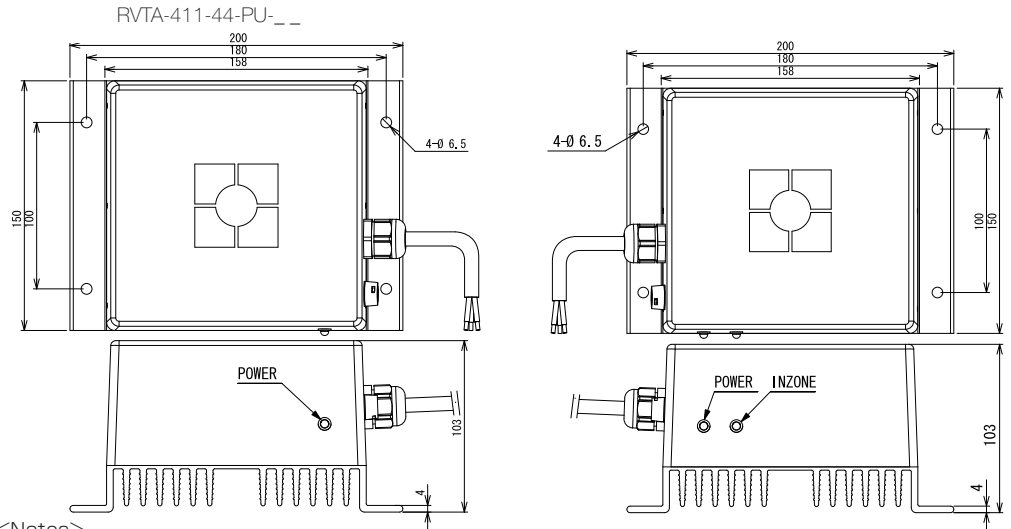


- ◆ Please note that the power supply may become unstable (such as chattering) when the transmission distance and the center offset are outside the specification range.

Dimension

Remote unit : RVTA-411-25-PU-__

Base unit : RVEA-411-3-PU-__



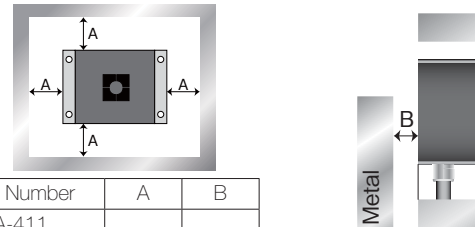
<Notes>

- (1) The minimum bending radius of the cable is 50mm.
- (2) Cable length of Base part must not be longer than 10m and Remote part must not be longer than 10m.

Installation

■ Influence of Surrounding Metal

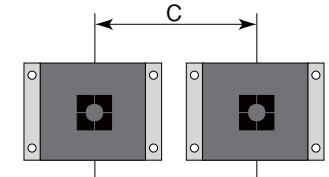
In order to avoid influence of surrounding metal, keep the free zone as described below. Remove metal chips or metallic debris on the active surface. Metal chips or metallic debris generate may damage to device or cause unexpected trouble.



Type Number	A	B	(mm)
RVTA-411...	150	45	
RVEA-411...			

■ Mutual intererance of the Head

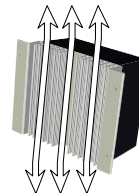
In order to avoid influence parallel-mounted parts, keep free zone as described below.



Type Number	C	(mm)
RVTA-411...	500	
RVEA-411...		

■ Fever of the main body

- (1) Since this system adopts natural-cooling method, please pay attention to natural convection to avoid surrounding temperature raise.
- (2) Take measures so that ambient temperature is not over 50 degrees Celsius, for RHV produces fever.



Wireless Power Supply by
B & PLUS K.K. (Former NIHON BALLUFF co., Ltd.)

Mail : b-plus-usa@b-plus-kk.com Web : http://www.b-plus-kk.com