

Remote PowerSupply System

Base Part : RVEI-030-2-PU__
RVEI-C01-2-PU__
Remote Part : RVTI-030-21-PU__
RVTI-C01-21-PU__

Attention for Installation

(Read this section thoroughly before installation.)

Before using the Remote Sensor, read this manual carefully.
During installation and operation, pay close attention to the safety aspect.

- ◆ Ensure the power is switched off during installation or maintenance operations.
- ◆ Use a regulated power supply, e.g. switch-model type.
Simpler power supplies, such as a full-wave rectification type, will cause the permissible ripple rating to be exceeded and may cause malfunction.
- ◆ Ensure correct connections by reference to the wiring diagram.
- ◆ To avoid malfunction caused by induction noise, cable should be kept apart from motor or other power cable.
- ◆ When the resin (ABS or ABS + PBT) is used to the case or the transmission surface, please be sure to avoid organic solvent or liquid containing them to splash over.
- ◆ Please install cable end "wiring part" in so that there is no water and cutting fluid.
(Water is transmitted to the internal from the cable core, there is a possibility of causing a problem such as short circuit or corrosion).
- ◆ Please do not face the output sensor to a metal at all times to avoid metal overheating or damage of the components.

Outline & Specification

24VDC/1A can be supplied in M30.

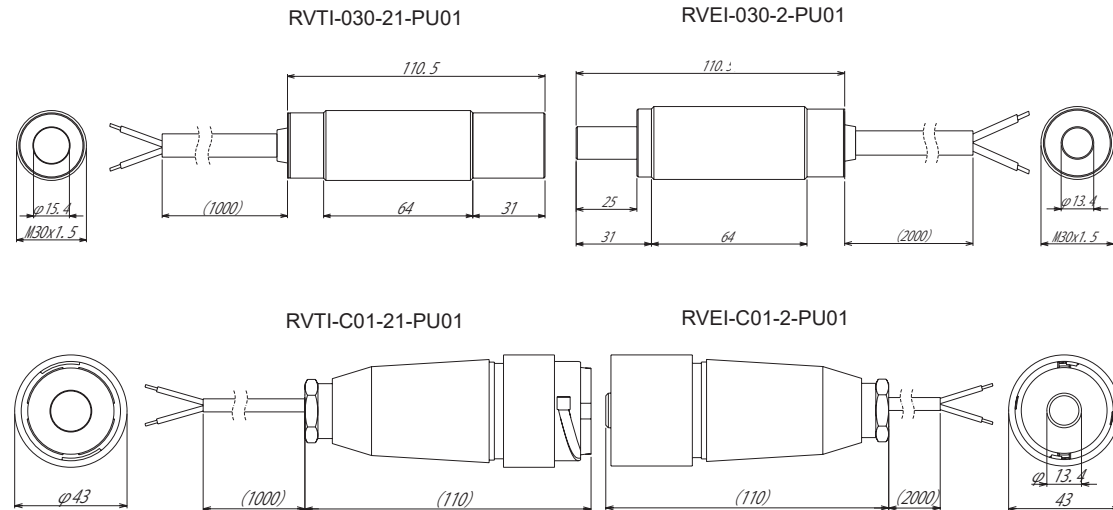
Covering current-carrying part makes it possible to remove under wet condition.

	M30 Type		Connector Type	
	Remote part	Base part	Remote part	Base part
Type number	RVTI-030-21-PU__	RVEI-030-2-PU__	RVTI-C01-21-PU__	RVEI-C01-2-PU__
Drive voltage	24V±1.5V DC	-	24V±1.5V DC	-
Drive current	≤1A*1	-	≤1A*1	-
Supply voltage	-	24VDC±10%	-	24VDC±10%
Current consumption	-	≤3A	-	≤3A
Operation distance	3...10mm		-	
Material	Case	Nickel plated brass	Polyamide6.6	
	Active surface	ABS	Polyamide6.6	
Cable	Phi6.2, 2 x 0.75mm ² /PUR		Phi6.2, 2 x 0.75mm ² /PUR	
	Brown : 24VDC / Blue : 0V		Brown : 24VDC / Blue : 0V	
Operation temperature	0...+50 deg.C.		0...+50 deg.C.	
Protection class	IP67		IP67	

*1 : The capacitor that can be connected with load is assumed to be 100uF.

- ◆ Please note that the power supply may become unstable (such as chattering) when the transmission distance and the center offset are outside the specification range.

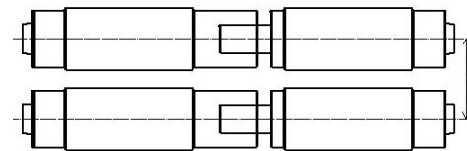
Dimension



Cautions for Head attachment

Mutual interference of the Head

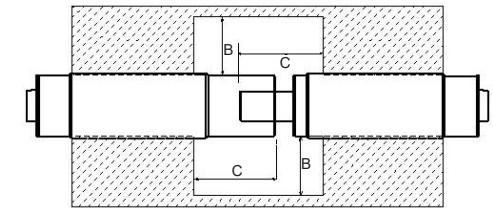
In order to prevent mutual interference between parallel-mounted sensors, keep minimum spacing as described below.



Type number	A
RVTI-030-... --- RVEI-030-...	35
RVTI-C01-... --- RVEI-C01-...	43

Influence of Surrounding Metal

When the Heads are mounted in metal, keep minimum spacing as described below in order to avoid influence of surrounding metal.



Type number	B	C	(mm)
RVTI-030-...	30	35	
RVEI-030-...		45	
RVTI-C01-...	20	-	
RVEI-C01-...		-	

Notes for wiring

- (1) Cable length of Base head must not be longer than 10m and Remote head must not be longer than 10m.