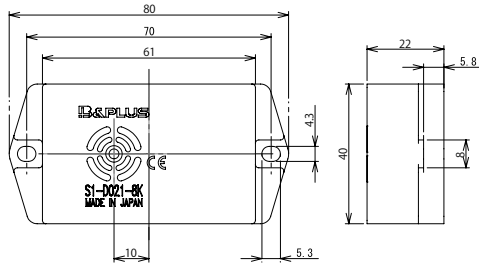


Dimension



Specification

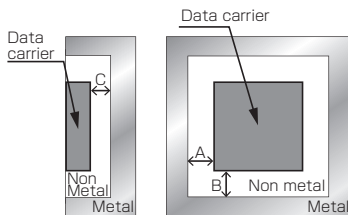
Function	Read / Write
Size	40 x 80 x 22mm
Case material	POM
Memory	8K byte ^{*1}
Operating temperature	0... + 70 deg.C.
Storage temperature	- 20 ... + 70 deg.C.
Protection class	IP67 (IEC)
Memory type	FRAM
Write cycles	Unlimited
Read cycles	Unlimited
Data retention time	10 years after writing in date
Installation	It attaches with a M4 screw. (1.2Nm)
Mouting in steel	non-flash mount
Vibration	10...55Hz 1.5mm XYZ 2 hours 100G XYZ 10 cycles total 60 cycles
Shock	50G 10times to each axis X-Y-Z total 18 times
Weight	95 g

*1 The last 4 bytes cannot be used.

Installation

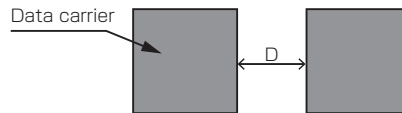
■ Installation in Metal (steel)

The surface of the Data carrier must not be lower than the surrounding metal.



■ Installation in side-by-side

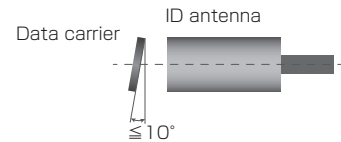
The minimum distance D between two Data carriers must be kept.



■ Permissible inclination

The sensing surfaces of Read/write head and Data carrier should be installed in parallel.

If the inclination of Data carrier to Read/write head becomes over 10 degrees, read/write distance and offset will decrease.



Applicable ID antenna	A	B	C	D
S3-A010-**	80	80	0	300
S3-A010J-**	80	80	0	300

(mm)

Appropriate Read/write head and max. read distance

Applicable ID antenna	S3-A010-**		S3-A010J-**	
	On metal	Non metal	On metal	Non metal
Mounting in metal				
Read distance(mm)	10...50	10...50	10...45	10...45
Write distance(mm)	10...50	10...50	10...45	10...45
Center offset (mm)				
Distance 5mm	-	-	-	-
10mm	± 5	± 5	± 5	± 5
15mm	± 5	± 5	± 5	± 5
20mm	± 5	± 5	± 5	± 5
25mm	± 5	± 5	± 5	± 5
30mm	± 5	± 5	± 5	± 5
35mm	± 5	± 5	± 5	± 5
40mm	± 5	± 5	± 5	± 5
45mm	± 5	± 5	± 5	± 5
50mm	± 5	± 5	-	-
55mm	-	-	-	-

Edition

A 2013.02.15 New document.

B 2014.02.04 Printing design change.